

# Maximizer 3B Asphalt Distributor

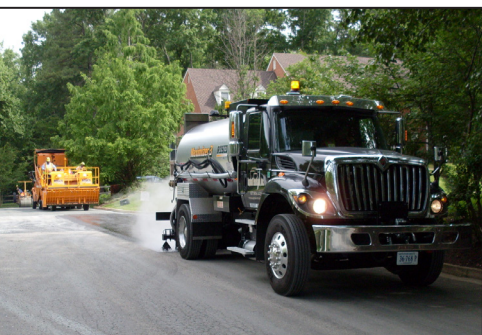
**Rosco**  
A LeeBoy Company



## Performance Features:

With a larger fully circulating extending spray bar, the Rosco Maximizer 3B has the ability to cover a wide area in an extremely efficient manner. Admired by contractors and municipalities alike, this trusted machine always delivers an accurately consistent end result. With the aid of a large color monitor, operators can monitor vitals, oversee the variable width and rate control or engage the enviro-flush clean out system among others. The Maximizer 3B is a highly versatile piece of equipment designed with the end user in mind.

- 8' to 16' Fully Circulating Extending Spraybar
- Automatic In-Cab Controls
- Internal Spraybar Valves
- 400 gallons per minute, Viking Asphalt Pump
- Enviro-Flush Clean Out System
- Straight-Line Start and Stop
- Accurate Application Regardless of Spraybar Width or Speed
- 12 Presets for Application Rate
- Radar Horn Speed and Distance Monitoring



# Maximizer 3B Asphalt Distributor Specifications



<b>Tank Capacity</b> - 1,050 gallons to 5,313 gallons * Gallons listed are maximum tank capacities. Recommended tank capacities may be limited by 1.) Thermal expansion of materials. 2.) Density of materials. 3.) Truck/axle load ratings. For more detail, please contact your local Rosco Sales Representative or Dealer.	- Readouts include FPM, GPM, total feet sprayed, total gallons sprayed, total sq. yards sprayed, flow and speed calibration, application rate, tank temperature, hour meter, spraybar width
<b>Tank</b> - Meets all applicable Federal DOT regulations - 10 gauge steel shell - 7 gauge steel reinforced, flanged heads - Seams are electrically welded	<b>Additional Standard Equipment</b> - Hand spray wand with a 25' rubber hose - Front and rear dial contents gauge - 4" dial, internal pencil thermometers - Sample valve - Back up alarm - Ladder and platform assembly - Rear bumper to protect spraybar
<b>Insulation</b> - 2" rock wool with spacers to prevent compression - Protected by an aluminium jacket	<b>Optional Equipment</b> - Installation for a customer supplied truck chassis - PTO transmission (required if not using front live power) - LPG burner, includes 48 gallon LP tank - Diesel burners with electronic ignition, 100% out fire protection and heat control - Diesel burners with outfire protection and heat limit control - Oil heat system, pump, spraybar and sump - Heated asphalt pump - Emulsion tank hand railing, electric actuated - Washdown system with pump and hose, self-winding hose reel - Loading hose, 3" x 15' flexible steel with quick couplers - Loading hose, 3" x 15' rubber with quick couplers - LED working lights, qty 4 - Additional toolboxes, depends on framerail availability - Electric overnight heat, 240V single phase - GPS speed sensor in lieu of Radar Horn speed sensor - Additional options available, visit LeeBoy.com
<b>Heat System</b> - Two diesel fired burners with electric ignition - 560,000 BTU per burner, per hour capacity	
<b>Asphalt Pump</b> - Viking, positive displacement pump - 400 gallon per minute	
<b>Clean Out</b> - Enviro-flush allows circulation through asphalt pump, valves, distributing lines and spraybar - Material returned to tank for later use or disposal - 25 gallons capacity	
<b>Spraybar</b> - Brass, slotted nozzles and valves are non-clogging - Quick-disconnect allows operator to change spray widths in 4" increments - 16' full circulating bar, extendable spraybar - Two 8' independently controlled sections - Nozzles: spaced 4" centers on spraybar - Each spray nozzle automatically turns on when extended and off when retracted	
<b>Operator's In-Cab Controls</b> - Plus+ CAN Bus control and onboard diagnostics - 7" 800 x 480, high-res color display - Automatic application rate control - Settings for flow, speed calibration, spraybar width, spraybar on/off control by section - Capable of storing up to 12 preset application rates for instant retrieval	



ST Engineering LeeBoy, Inc. ■ 500 Lincoln County Parkway Extension ■ Lincolnton, NC 28092 ■ 704.966.3300  
[www.LeeBoy.com](http://www.LeeBoy.com)

LeeBoy and the LeeBoy logo are registered trademarks of ST Engineering LeeBoy, Inc. Equipment model names, slogans and subsidiary logos appearing in this collateral may be registered trademarks or the trademarks of ST Engineering LeeBoy, Inc. The technical data contained herein is subject to change due to continuous engineering and development. Accordingly, LeeBoy reserves the right to modify at any time. © 2020 ST Engineering LeeBoy, Inc. All rights reserved. BR-7002.6-EN

