

8520C Asphalt Paver

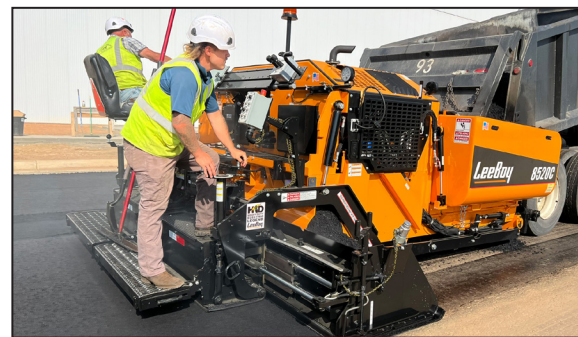
LeeBoy®



Performance Features:

We've set the standards in heavy-commercial paving even higher! Equipped with exciting new features that were truly designed with the paving professional in mind, the LeeBoy 8520C is a 125hp workhorse. Standard machine assets include the 3,450 lbs Legend HD Screed with, heavy-duty conveyor chains, dual seating and sliding main controls, a LeeBoy 2-year product warranty as well as many other enhancements. As always, LeeBoy's wide slow-moving conveyor system moves material from the truck to the screed without segregation which ensures a flawless mat.

- 125 hp (93 kw) Kubota Tier 4 Final Diesel Engine
- Legend HD Screed, Weight 3,450 lbs
- Paving Widths Variable Up To 15'
- 9 Ton Capacity Material Hopper
- Operator's Choice of High or Low Deck Configuration
- Remote Mounted SCR for Greater Visibility
- Dual Electronic Steering
- Ultra-efficient Wide-Conveyor Material Management
- Automatic RPM Control System
- Electric Screed Heat, 14.4 kw Belt-Driven Generator
- Actuator Driven Hood Lift to Aid in Maintenance



8520C Asphalt Paver Specifications



| | | | |
|---------------------|---|-------------------------------|--|
| Dimensions | <ul style="list-style-type: none"> - Length: 14' 10" 13' 10" Transport - Width: 8' 6" transport - 10' hopper wings down - Height: High Deck: 6' 10" - Total Weight: 21,400 lbs. | Operator's Controls | <ul style="list-style-type: none"> - All control switches are in a single control box which slides from right side to left side - Each side of the screed has independent control box |
| Engine | Kubota turbocharged diesel, Tier 4 Final – 125 hp (93 kw) | Steering | <ul style="list-style-type: none"> - Dual electronic steering controls - Electronically controlled pumps operated by the forward/reverse joysticks |
| Capacities | <ul style="list-style-type: none"> - Fuel: 32 gallons - Hydraulic reservoir: 25 gallons - Washdown tank: 7 gallons - DEF tank: 5 gallons | Push Rollers | <ul style="list-style-type: none"> - Two rollers with sealed bearings mounted to allow pivoting on frame - Vertically adjustable oscillating push rollers |
| Hopper | Hopper size: 9 ton | Track Drive System | <ul style="list-style-type: none"> - Hydrostatically powered, self-cleaning crawler type - Track size: 14" w x 87" l poly - Paving speed: 0 to 150' per minute (1.7 mph) - Travel speed: 0 to 300' per minute (3.4 mph) |
| Paving Widths | Variable up to 15' | Additional Standard Equipment | <ul style="list-style-type: none"> - Gauge package - Back-up alarm - LED beacon light - LED work light package - Vandalism protection covers - 2 Year Standard Product Warranty |
| Paving Depths | <ul style="list-style-type: none"> - Manual flight screws positioned on the screed to control material thickness - Depth: 0" to 6" | Optional Equipment | <ul style="list-style-type: none"> - Legend HD PRO Screed, Weight 4,150 - Variable paving width up to 15' 6" - Screed extension vibration - Automatic screed temperature control - Rubber track, continuous - Sloping screed extensions - Heated endgates - Slope meter - Horizontal flight screws - 3:1 flight screw adjusters - Truck hitch - Power crown - Single point lube system, screed - Steering wheel drive controls, in lieu of joysticks - Wiring only, grade controls (TopCon) - Sonic grade control, one side (TopCon) - Dual grade control (TopCon) - Dual grade and slope (TopCon) - 12" x 4.5" berm extension, left & right - Raised on Blacktop package - Other options available |
| Screed | <ul style="list-style-type: none"> - Legend HD Screed - Consisting of a main screed and two hydraulically operated screed extensions - Equipped with two electric vibrators, 4100 RPM | | |
| Screed Heat | <ul style="list-style-type: none"> - Legend electric screed heat, 14.4 kw generator - Electric timer and automatic RPM control system - Environmentally safe, sealed s-curve elements in main screed and sealed blade-style elements in extensions | | |
| Screed Crown/Valley | <ul style="list-style-type: none"> - Equipped with a crown/invert adjustment - Includes a levelling indicator for the operator | | |
| Material Handling | <ul style="list-style-type: none"> - HD conveyor chains and flight bars - Two hydraulically operated under auger material cutoffs - Single point lube system - Two 12" proportionally adjustable augers | | |
| Operator's Platform | <ul style="list-style-type: none"> - Full machine width platform - Walkboard extension slide outs, left and right - Two operator seats | | |
| Washdown System | Electric HD pump with hose and two hose reels | | |

*Published Weights are approximate weight and will vary contingent on options.



ST Engineering LeeBoy, Inc. ■ 500 Lincoln County Parkway Extension ■ Lincolnton, NC 28092 ■ 704.966.3300
www.LeeBoy.com



LeeBoy and the LeeBoy logo are registered trademarks of ST Engineering LeeBoy, Inc. Equipment model names, slogans and subsidiary logos appearing in this collateral may be registered trademarks or the trademarks of ST Engineering LeeBoy, Inc. The technical data contained herein is subject to change due to continuous engineering and development. Accordingly, LeeBoy reserves the right to modify at any time. © 2020 ST Engineering LeeBoy, Inc. All rights reserved. BR-1009:11-EN