

8500E Asphalt Paver

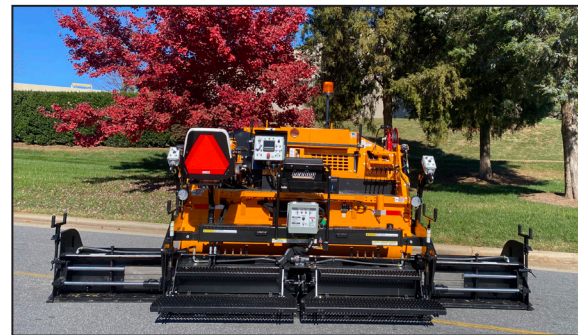
LeeBoy



Performance Features:

Incorporating enhanced features including increased engine horse power, robust operating weight, yet retaining a 15 foot-wide screed, the 8500E allows for wider and longer pulls than competitive pavers. This important detail, along with less hand work, means the end user minimizes the number of stops which increases productivity and profitability. The 8500E features traditional controls which lessens any learning curve and allows for immediate use. This paver is a true commercial class machine easily fitting onto a trailer with other complementary equipment in order to provide high revenue opportunities for its patrons.

- 71 hp (53 kw) Kubota Tier 4 Final Turbocharged Diesel DOC Only Engine
- Paving Widths Variable Up To 15'
- Left Side Control Levers, Sliding Operator Control Station
- Ultra-efficient Material Management System
- Gauge Package for System Monitoring
- 7.5 Ton Capacity Material Hopper
- Proven Legend Screed System
- Propane or Electric (option) Screed Heat
- Steel Track Drive with Automatic Adjustment
- Automatic Screed Heat Cycling



8500E Asphalt Paver Specifications



Dimensions	<ul style="list-style-type: none"> - Length: 12' 8" transport 13' 4" operating - Width: 8' 6" transport 10' hopper wings down - Height: 6' 4" with beacon folded down - Total Weight: 18,100 lbs. 	Steering	- Independent hydrostatic steering from the left or right side of machine
Engine	Kubota turbocharged diesel, (DOC only) Tier 4 Final – 71 hp (53 kw)	Washdown System	Electric HD pump with two hoses
Capacities	<ul style="list-style-type: none"> - Fuel: 23 gallons - Hydraulic reservoir: 19 gallons - Washdown tank: 7 gallons 	Push Rollers	<ul style="list-style-type: none"> - Two rollers with sealed bearings mounted to allow pivoting on frame - Adjustable height push rollers with self-cleaning scrapers
Hopper	Hopper size: 7.5 ton	Track Drive System	<ul style="list-style-type: none"> - Hydrostatically powered, self-cleaning crawler type - Track size: 12" wide x 77" long steel - Paving speed: 0 to 135' per minute (1.5 mph) - Travel speed: 0 to 290' per minute (23.2 mph)
Paving Widths	Variable up to 15'	Additional Standard Equipment	<ul style="list-style-type: none"> - Back-up alarm - LED beacon light - Electronic gauge package (oil pressure, voltmeter and fuel) - Glow plugs - Vandalism protection covers - Horn - Wired for sonic auger, sensors and cords
Paving Depths	<ul style="list-style-type: none"> - Manual flight screws positioned on the screed to control material thickness - Depth: 0" to 6" 	Optional Equipment	<ul style="list-style-type: none"> - Legend Electric screed 8' to 15' - Heated end gates - 14" polyurethane pad track - Rubber track 15.75" wide continuous in lieu of steel - Truck hitch - Slope meter - Second seat - LED work light package - Sonic auger, sensors and cords - Electric screws for grade controls - Wiring only, grade controls (TopCon) - Sonic grade controls, one side (TopCon) - Dual grade controls (TopCon), includes electric screws - Hose reel, limited to two
Screed	<ul style="list-style-type: none"> - Legend Propane full free floating screed - Consisting of a main screed and two hydraulically operated screed extensions - Equipped with one electric vibrator 		
Screed Heat	<ul style="list-style-type: none"> - Two propane burners on main screed - One propane burner in each extension - OPTIONAL – Electric heated 		
Screed Crown/Valley	<ul style="list-style-type: none"> - Equipped with a crown/invert adjustment - Includes a levelling indicator for the operator 		
Material Handling	<ul style="list-style-type: none"> - Two independently controlled, hydraulically operated under auger material cutoff - Two variable 12" diameter independent hydraulically operated cast augers 		
Operator's Platform	-Low Deck: Seat mounted on screed		
Operator's Controls	<ul style="list-style-type: none"> -All functions can be controlled from left side - Right side levers include screed raise/ float, left and right cutoffs, hopper wings, and right 		



ST Engineering LeeBoy, Inc. ■ 500 Lincoln County Parkway Extension ■ Lincolnton, NC 28092 ■ 704.966.3300
www.LeeBoy.com



LeeBoy and the LeeBoy logo are registered trademarks of ST Engineering LeeBoy, Inc. Equipment model names, slogans and subsidiary logos appearing in this collateral may be registered trademarks or the trademarks of ST Engineering LeeBoy, Inc. The technical data contained herein is subject to change due to continuous engineering and development. Accordingly, LeeBoy reserves the right to modify at any time. © 2020 ST Engineering LeeBoy, Inc. All rights reserved. BR-1006.1-EN