



HEAVY DUTY FLAIL CHOPPERS

Series
KG & KK



FIT FOR EVERY JOB

A series of heavy duty capacity machines which are designed to deal with heavier working conditions, not only for chopping prunings up to 10 cm (4") diameter but also for other vegetation residues such as corn stalks etc.

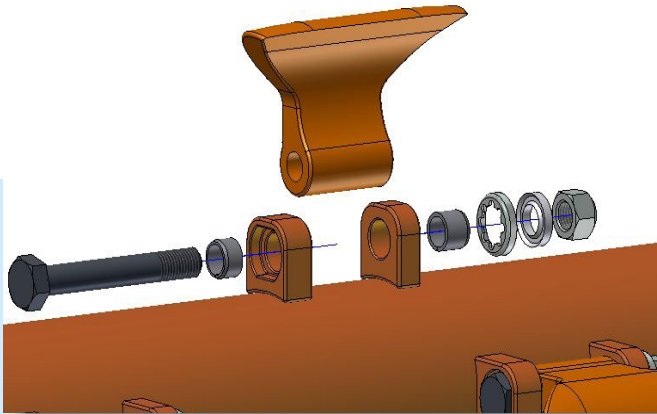
Standard configuration includes a parallelogram-type offset feature.

***Extreme robust construction.
Proven to be the best option for the toughest job.***



KG & KK SERIES

Heavy duty flail choppers



2,2 kg (5 lbs) heavy-duty "PERFECT" flails are especially designed for pulverizing prunings. They are fitted to the double electronically balanced flail rotor with heavy bolts and replaceable steel bushings. They provide an excellent pulverization. Combi-flail are optionally available.



A full width rear roller and skids at both sides provides excellent stability and easy handling.

To protect the bearings of the rear rollers, the bearings are fitted with unique covers to prevent humidity, dust and mud from entering.

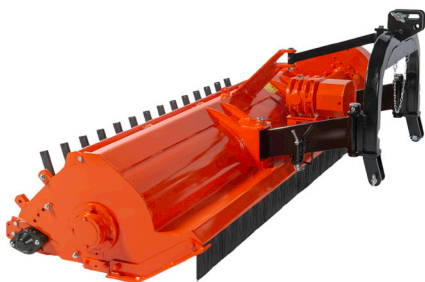
KG & KK-245 THE SUPERLATIVE

The KG/KK-245HD chopper has an even heavier frame, a heavy-duty pto shaft and gearbox as well as a flail rotor and rear roller of increased diameter.

KK models are delivered with an adjustable rear opening cover and with optional rake tines.

EXTRA'S

- Headstock for front mount
- Hydraulic offset feature
- Combi-flails
- Pro-fix protection against stones
- Wearing plate



Technical specifications

| KG - standard KK - with rake tines | KG-150 KK-150 | KG-180 KK-180 | KG-220 KK-220 | KG-245HD KK-245HD |
|--|------------------|------------------|------------------|----------------------|
| Cutting width (cm/ inch) | 150/ 4'11" | 180/ 5'11" | 220/ 7'3" | 245/ 8'1" |
| PTO speed (rpm) | 540 | 540 | 540 | 540 |
| Flail rotor speed (rpm) | 2100 | 2100 | 2100 | 2100 |
| Min. Power* required at 540 rpm grass cutting etc. (kW/ HP) | 24/ 33 | 26/ 35 | 30/ 40 | 44/ 60 |
| brush chopping etc. (kW/ HP) | 30/ 42 | 33/ 45 | 44/ 60 | 58/ 80 |
| Flails 0,9/ 2,2 kg = 1,98/ 4,85 lb | 16/ 9 | 18/ 12 | 22/ 12 | /16 |
| Total width (cm/ inch) | 171/ 5'7" | 206/ 6'9" | 246/ 8'1" | 275/ 9'0" |
| Height belt cover (cm/ inch) | 72/ 28" | 72/ 28" | 72/ 28" | 77/ 30" |
| Tractor 3 pt. Linkage (cat.) | I + II | I + II | I + II | I + II |
| Max. offset from tractor centre (cm/ inch): | 112/ 3'8" | 142/ 4'8" | 182/ 6'0" | 181/ 5'1" |
| Weight KG (kg/ lb) | 650/1430 | 700/ 1543 | 855/ 1885 | 990/ 2183 |
| Weight KK (kg/ lb) | 765/ 1687 | 815/ 1797 | 865/ 1907 | 1035/ 2282 |
| Number of rake tines KK | 11 | 13 | 14 | 16 |

As our policy is one of continuous improvement, we reserve the right to change the specification or to modify the desing without prior notice



Van Wamel B.V.
Energieweg 1, 6658 AE
Beneden Leeuwen
The Netherlands

+31 (0) 487 59 29 44
+31 (0) 487 59 29 44
@ www.perfectvanwamel.com
perfect@vanwamel.nl

Your PERFECT dealer