



LOW PROFILED FLAIL CHOPPERS

Series
BG2 & BK2



SHREDS UP TO 8 CM

Because of their low and compact but heavy construction BG2 and BK2 flail choppers are very popular for chopping orchard- and vineyard prunings up to 8 cm (3 1/8") diameter.

The profile is very low: the height of the V-belt cover is only 51 cm (20"), even for the front mounted models.

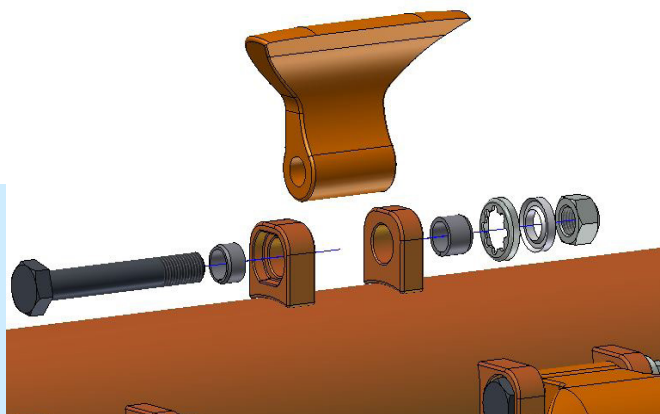
Standard configuration includes parallelogram-type offset system.

*Extreme low but robust flail choppers.
Best choice for shredding in modern orchards.*

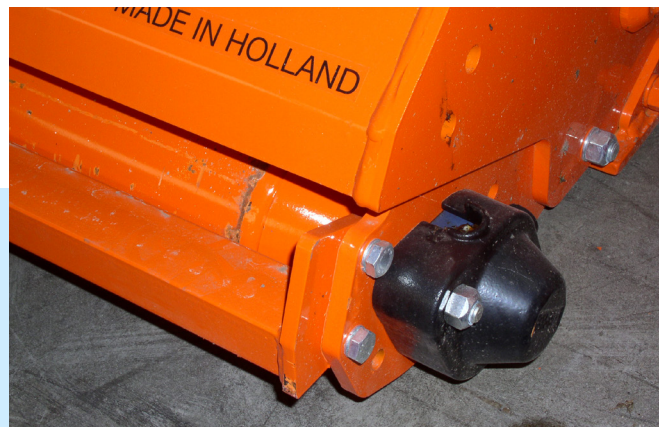


BG2 & BK2 SERIES

Low profiled flail choppers



2,2 kg (5 lbs) heavy-duty "PERFECT" flails are especially designed for pulverizing prunings. They are fitted to the double electronically balanced flail rotor with heavy bolts and replaceable steel bushings. They provide an excellent pulverization. Combi-flail are optionally available.



Shred material is thrown and spread over the rear roller. The roller bearings are fitted to the exterior for quick and easy maintenance. Covers limit the penetration of dirt and moisture, which significantly increases the lifespan of the bearings.

HEAVY DUTY DRIVE SYSTEM

A gearbox with spiral toothed gears and the V-belts with a springloaded automatic belt tensioner assure an indirect flexible drive with maximum security and a minimum maintenance.

For a better pick-up and pulverization of thin prunings or prunings that are laying flat, our flail choppers Series BK2 are delivered with rake tines which are adjustable in height.

EXTRA'S

- Headstock for front mount
- Hydraulic offset feature
- Combi-flails
- Pro-fix protection against stones
- Wearing plate

Technical specifications

BG2 - standard

BK2 - with rake tines

| | BK2-90 | BG2-105 BK2-105 | BG2-120 BK2-120 | BG2-135 BK2-135 | BG2-150 BK2-150 | BG2-180 BK2-180 | BG2-210 BK2-210 |
|--|------------|--------------------|--------------------|--------------------|--------------------|--------------------|--------------------|
| Cutting width (cm/ inch) | 90/ 3'0" | 105/ 3'4" | 120/ 3'9" | 135/ 4'4" | 150/ 4'11" | 180/ 5'11" | 210/ 6'11" |
| PTO speed (rpm) | 540 | 540 | 540 | 540 | 540 | 540 | 540 |
| Flail rotor speed (rpm) | 2100 | 2100 | 2100 | 2100 | 2100 | 2100 | 2100 |
| Min. power* required at 540 rpm | | | | | | | |
| grass cutting etc. *(kW/ HP) | 18/ 25 | 18/ 25 | 18/ 25 | 22/ 27 | 22/ 30 | 26/ 35 | 28/ 38 |
| brush chopping etc. (kW/ HP) | 22/ 30 | 22/ 30 | 26/ 35 | 27/ 37 | 30/ 40 | 33/ 45 | 38/ 52 |
| Flails 0,9/ 2,2 kg = 1,98/ 4,85 lb | 12/ | 12/ 6 | 12/ 8 | 18/ 8 | 16/ 9 | 20/ 12 | 20/ 12 |
| Total width (cm/ inch) | 110/ 3'6" | 128/ 4'2" | 143/ 4'7" | 158/ 5'2" | 173/ 5'7" | 203/ 6'7" | 233/ 7'6" |
| Height belt cover (cm/ inch) | 51.5/ 1'7" | 51.5/ 1'7" | 51.5/ 1'7" | 51.5/ 1'7" | 51.5/ 1'7" | 51.5/ 1'7" | 51.5/ 1'7" |
| Tractor 3 pt. linkage (cat.) | I + II | I + II | I + II | I + II | I + II | I + II | I + II |
| Max. offset from tractor centre (cm/ inch) | 56/ 1'8" | 62/ 2'0" | 80/ 2'6" | 95/ 3'1" | 110/ 3'6" | 140/ 4'6" | 170/ 5'6" |
| Weight BG2 (kg/ lb) | | 480/ 1058 | 510/ 1124 | 525/ 1157 | 550/ 1213 | 640/ 1411 | 725/ 1598 |
| Weight BK2 (kg/ lb) | 435/ 959 | 500/ 1102 | 535/ 1179 | 550/ 1213 | 590/ 1301 | 665/ 1466 | 800/ 1764 |
| Number of rake tines BK2 | 7 | 8 | 9 | 9 | 11 | 13 | 15 |

As our policy is one of continuous improvement, we reserve the right to change the specification or to modify the design without prior notice



Van Wamel B.V.

📍 **Van Wamel B.V.**
Energieweg 1, 6658 AE
Beneden Leeuwen
The Netherlands

☎ +31 (0) 487 59 29 44
☎ +31 (0) 487 59 29 44
@ www.perfectvanwamel.com
📧 perfect@vanwamel.nl

Your PERFECT dealer